

Installing the XMT-120A / XMT-350 Fixture Library Editor

The XMT-120A / XMT-350 Fixture Library Editor can be installed easily by following the instructions below. It is strongly recommended that you follow these procedures step-by-step.

1. System Requirements

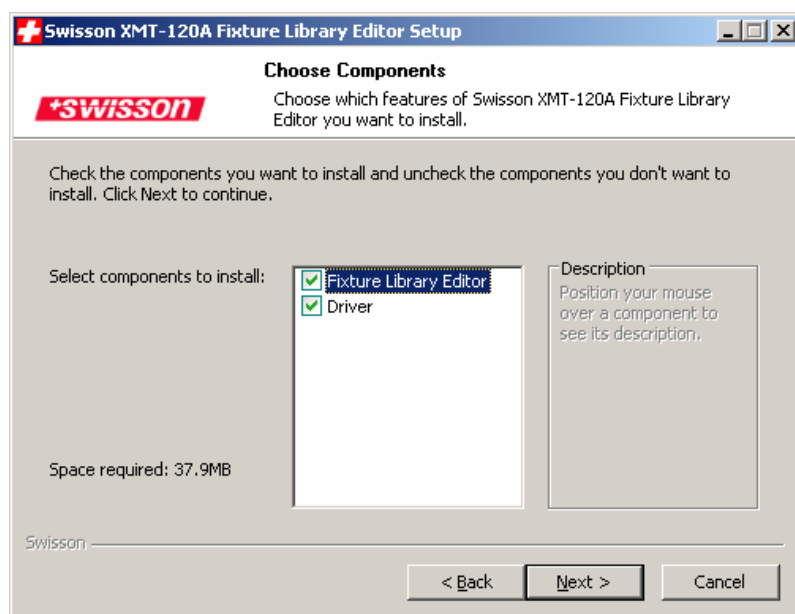
Make sure, you have a PC available that meets the following requirements.

Operating System	Windows XP or a later version of Windows
USB Connection	1 available USB port + 1 Micro USB cable
Hard Disk Space	At least 60 MB of free space

2. Installation of the XMT-120A / XMT-350 Fixture Library Editor

Download the XMT-120A / XMT-350 Fixture Library Editor from <http://www.swisson.com>, if you haven't done this yet. Extract the zip file and launch the installer executable 'Setup_Fixture_Library_Editor.exe'.

After accepting the license agreement, a dialog as depicted below will show up. Make sure the checkboxes 'Fixture Library Editor' and 'Driver' are both ticked. Continue the setup by clicking 'Next' twice, then hit 'Install' and wait until the setup process is completed.



3. Using the XMT-120A / XMT-350 Fixture Library Editor

Click *Start>All Programs>Swisson XMT Fixture Library Editor>Swisson XMT Fixture Library Editor* to launch the program. If you have an XMT-120A, you may need to update the firmware of your device. To do so, connect the XMT-120A to your PC and navigate to *MODES>OPTIONS>FIRMWARE UPDATE* on the display of the XMT-120A. Then select *Edit>Update Firmware* in the menu of the XMT-120A / XMT-350 Fixture Library Editor to launch the XMT-120A / XMT-350 Firmware Update Tool. Hit the 'Discover Devices' button and then press 'Update Firmware' in order to install the new firmware on the device.

After completing the firmware update, the device will turn itself off. When you turn it on for the first time after a firmware update, the device may need about 15 seconds to reorganize its data structures.

+SWISSON	XMT-120A / XMT-350 Fixture Library Editor		1
-----------------	--	--	---